

Inside this edition:

Critical-thinking test critical for MTSU, page 2
Hip-hop, art converge in weekly shows, page 3
Students change habits to save cash, page 5



Knights to the rescue!, page 7

Happy holidays from News & Public Affairs!

The Record returns Jan. 12, 2009.

Check in anytime at www.mtsunews.com!

a publication for the Middle Tennessee State University community

Dec. 1, 2008 • Vol. 17/No. 11

the RECORD

Preparation is key

UNIVERSITY-WIDE OPEN FORUM

Positioning the university for the future – Strategic Work Groups

Work Group for External Resource Development

Work Group for Energy Efficiency and Conservation Initiatives

Work Group For Realignment, Restructuring, Consolidation or Elimination of Non-Academic Support Units

Work Group for Academic and Instructional Review

BELT-TIGHTENING AHEAD— Universitywide efforts, led by President Sidney A. McPhee, are under way to prepare for additional state funding cuts that will have a critical impact on MTSU's operations. During two open forums Nov. 18 and 19, McPhee asked for input from the campus community to help four new strategic work groups, outlined in the PowerPoint slide at left, suggest the best methods to face the university's future. To view the president's presentation, visit www.mtsu.edu/strategicgroups.shtml and click on the link at the bottom of the page. E-mail your suggestions for positioning the university for the future to smcphee@mtsu.edu.

PowerPoint courtesy of the President's Office

EXL projects worth a million to community

by Tom Tozer
ttozer@mtsu.edu

The impact of experiential learning programs at MTSU for 2007-08—specifically, the dollar value of community work that resulted from hands-on, service-learning projects—amounted to more than \$1 million.

There were 2,094 community projects under the EXL umbrella, equaling nearly 137,000 hours of work.

Throughout that year, there were 218 course sections and 3,126 students enrolled in EXL courses. Sixty-four faculty members participated in the program, which produced 15 EXL Scholars.

"I think many students and faculty are realizing and appreciating the value of applying classroom knowledge to the real-world environment," said Dr. Jill Austin, who has spearheaded the EXL initiative for the past four years.

Austin, chairperson of the management and marketing department in the Jennings A. Jones College of Business, convened a committee in 2004 to explore ideas that would fulfill a Southern Association of Colleges and Schools requirement to develop a program to enhance student learning. The committee selected experiential learning and presented a plan in 2005 to create an Experiential Scholars Program at MTSU.

The EXL Scholars Program requires a student to take 16 to 18 hours of EXL classes, including at least one practical-experience class, such as an internship or study-abroad experience. There is an internal service component, in which a student assumes a leadership role on campus, and an

See 'EXL' page 5

1,600-plus to receive degrees Dec. 13

by Lisa L. Rollins
lrollins@mtsu.edu

Some 1,600-plus degree candidates are expected to graduate during MTSU's 97th fall commencement, reports Sherian Huddleston, associate vice provost of enrollment services.

On Saturday, Dec. 13, MTSU again will feature dual ceremonies and dual speakers at 9 a.m. and 1 p.m. in Murphy Center. Of the 1,613 set to graduate during the 97th fall commencement, 1,400 are undergraduates and 213 are graduate students.

Candidates from the College of Graduate Studies, Jennings A. Jones College of Business, and College of Education and Behavioral Science will receive their degrees in the morning ceremony. That afternoon, degrees will be conferred on candidates in the Colleges of Basic and Applied Sciences, Liberal Arts, Mass Communication, and Continuing Education and Distance Learning, said Dr. Diane L. Miller, executive vice provost and chairwoman of the commencement committee.

Darrell S. Freeman Sr., who serves as president and CEO of Zycron Inc., an international information-technology services firm headquartered in Nashville, will serve as the guest speaker for the 9 a.m. ceremony.

As leader of Zycron, Freeman founded the firm in 1991 and oversees its daily operations, which include providing IT solutions to a global

client base of diverse industries such as health care, transportation and logistics, telecommunications, automotive, retail and financial services. During its history, Zycron has become a primary IT provider for numerous Fortune 500 companies.

A two-time graduate of MTSU earning a Bachelor of Science degree in 1987 and his Master of Science degree in 1990, Freeman also currently serves as chairman of the Nashville Area Chamber of Commerce. He is the first such chairman in recent history to be re-elected for a second term.

A member of Omega Psi Phi fraternity and the

See '1,600' page 5

Who: 1,613 graduates*
What: Fall 2008 commencement
When: 9 a.m. and 1 p.m., Saturday, Dec. 13
Where: Murphy Center, MTSU

Speakers:

- Darrell S. Freeman Sr., president and CEO of Zycron Inc.; 9 a.m. ceremony
- Chancellor Charles Manning, Tennessee Board of Regents, 1 p.m. ceremony

Webcast: Go to www.mtsunews.com and click on the "Graduation Info" link on the left side of the page, then click "Graduation live streaming video" and follow the instructions. In addition to the video link, the "Grad info" page also has links to other important graduation news, including photo and DVD purchases. Video will be available about 15 minutes before each ceremony begins; you'll need Windows Media Player to view it.

*Approximate number as of Nov. 19, 2008.



MIDDLE TENNESSEE STATE UNIVERSITY

www.mtsunews.com

IN BRIEF

SAVE PLASTIC AND PLANET

A new partnership between Pepsi, MTSU Athletics and Waste Management has provided a recycling container for plastics at the

university's Greenland Drive collection location. Clean, rinsed plastic containers in grades one through seven, which include just about all types of bottles regardless of color, now can be deposited into the container for recycling.

NONPROFIT ORGANIZATION
U.S. POSTAGE PAID
MURFREESBORO TN
PERMIT NO. 169

Seniors: Critical-thinking skills test is critical for MTSU

by Stacy Williams and Elizabeth McAmis
news@mtsu.edu

In a room full of graduating seniors, there is bound to be nervous tension circulating. However, in the Tennessee Room of the James Union Building at MTSU, there also was a sense of apathy and frustration as seniors recently took the required General Education Exit Exam.

MTSU seniors have been required to take the GE Exam since the 1970s. The university uses the nationally recognized California Critical Thinking Skills Test format to assess students' ability to apply logic to a variety of questions. This means that the test sets aside the student's major and instead examines reasoning skills. Many students with whom we spoke were curious as to how such a standardized test could measure the value of their education. And because many of us are uninformed of our scores' impact on MTSU, we don't exactly take the test seriously. Some even consider it a waste of time.

Fay Parham, executive director of MTSU's Office of Institutional Effectiveness, Planning and Research, which administers the exam, says the university has a vested interest in developing students' critical-thinking skills.

"The provost wanted the campus to give greater attention to developing students' critical-thinking skills, and the CCTST provided this focus," Parham says.

Now, the test itself may be a good representation of one's logical thought process. But if students don't try their best to finish the exam or answer the questions to the best of their ability, can the results truly evaluate how an MTSU education has affected their critical-thinking skills?

The IEPR Office says that general-education exit exams are required by the state of Tennessee to help colleges and universities determine the effectiveness of general-education courses and make changes where needed. Good test results also provide proof to the general public that the university is achieving its goals.

And graduating seniors are aware that a compilation of the scores can affect the value of the MTSU degree. If GE Exam scores are good, MTSU also receives additional state funding.

Results of this exam are translated into a point system called the Performance Funding Program. The GE Exam is worth up to 15 points out of a total 100 points in the program. Last year, each point earned was worth an equivalent of almost \$68,000 in MTSU funding. According to the Executive Summary of the General Education Exam Report for 2007-08, MTSU students

scored extremely well: "In summary, the 17.7 average total score exceeded the 16.8 national average. MTSU will receive the maximum 15 points for this Performance Funding standard for the first time since 2000-2001."

The GE Exam results of 2006-07 MTSU graduates generated more than \$1 million in state funding for future students. Although the final 2007-08 funding totals won't be finalized until spring 2009, it appears that the latest dollar amount "will likely increase," according to the report summary.

Wow.

If students were made aware of how much of an impact their scores can have on MTSU, we believe that they would try harder on the exam. Other than being a graduation requirement, there seems to be little incentive for students to think during the test. And whether or not one completes the exam, he/she is required to stay in the room for the full hour's duration of it; our fellow test-takers finished quickly and occupied the remaining exam time with sleep, books or newspapers.

If we had known that the GE Exam was worth that much money to MTSU, we definitely would have taken the test more seriously.

Although the GE Exam information is publicly accessible on the Web, students are not made aware of where to look. E-mails that inform graduating seniors of the exam dates also should include a link to the financial impact of the exam on the IEPR Office Web site, www.mtsu.edu/~iepr. Many students are not even aware of the existence of the IEPR Office or its site, but the staff members are more than willing to help students learn more about how their performance enhances the quality of education at MTSU.

The university hopes students will take the GE Exam seriously, Parham says, especially in the wake of ongoing budget cuts.

"It takes a lot of money to run this university," the executive director adds.

Our advice to prospective graduates: Do your best on the GE Exam. Current students have benefited from previous test scores and, most likely, future students will benefit from the results of the graduating class of 2008.

For more information about the GE Exam, contact IEPR at 615-494-8803 or visit the Web site at www.mtsu.edu/~iepr.

Stacy Williams and Elizabeth McAmis, seniors scheduled to graduate Saturday, Dec. 13, have participated in practicums this semester in the Office of News and Public Affairs. Williams is a journalism and global studies double major with a minor in Spanish, and McAmis is an advertising/public relations major with minors in film studies and business administration.



Williams



McAmis

News and Public Affairs

Here to help you

615-898-2919 • news@mtsu.edu • www.mtsunews.com



Student's sales ability helps clinch national marketing award

by Claire Rogers
news@mtsu.edu

An MTSU student won the top award at the Russ Berrie Institute National Sales Challenge Nov. 8 at William Paterson University in Wayne, N.J.

Chad Hill, a senior marketing major set to graduate Dec. 13, accepted his award as the contest closed. MTSU's sales team, led by Assistant Professor of Marketing Garry Smith, placed fourth overall in the competition. Other students from the MTSU sales team competing in the RBI National Sales Challenge were John Ferraro, a senior concrete industry

major, and Ashley Harris, a junior agribusiness major.

Students competed in three challenges: a sales call role-play, speed-selling interview and prioritizing a day in the life of a salesperson.

"The sales call was probably my favorite competition," Hill said.

"That's what I want to do in my career. To perform a call in front of real-world business leaders and have them give me feedback was fun and interesting."

Judges for the RBI National Sales Challenge included business educators, institute staff and experienced salespeople. These judges rated competitors on an A+ to F scale.

The challenge aims to improve the communication and sales skills of students by asking them to focus on customer service and personal presence under stressful circumstances.

The contest also serves as a great way for students to network with valuable industry contacts. Sponsors of the challenge, like Valpak and AT&T, often look at contestants for entry-level positions.

Hill currently is interviewing for a job in sales with a few companies represented at the RBI National Sales Challenge.

"Two weeks ago I wasn't sure what I would do after graduation," said Hill, 22. "Now I'm not sure who

I will be working for, but I know I'll have a job."

MTSU's sales team travels to different sales competitions across the country each year.

"Joining the sales team gives you a chance to test your real-life skills," Hill said. "It's a great opportunity for any student interested in sales, regardless of their major."

The Russ Berrie Institute for Professional Sales is part of William Paterson University's business college. William Paterson University has hosted the annual RBI National Sales Challenge since the institute was founded in 2002.

Office of Institutional Research site nabs regional honors

by Claire Rogers
news@mtsu.edu

The MTSU Office of Institutional Research received a regional award for Best Institutional Research Web site on Oct. 21 at an annual conference for the Southern Association for Institutional Research.

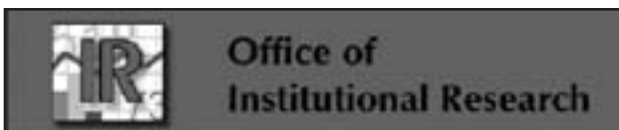
The award was presented to Dr. Cornelia Wills, director of institutional research at MTSU, during the SAIR conference's awards breakfast. The department's Web site was selected by a panel of peer judges based on criteria such as functionality, data quality and ease of use.

The Office of Institutional Research serves as the central administrative unit for providing data about the university. It plays a pivotal role in the planning, evaluation, accreditation and decision-making efforts of MTSU. In addition, the office pro-

vides data to external regulatory agencies such as federal, state and regional governments, the Tennessee Board of Regents, the Tennessee Higher Education Commission, college guidebook publishers and other external readers.

This information is used both inside and outside the university to measure program effectiveness, guide strategic planning, provide public relations and help recruit prospective students.

"Keeping information on the Internet provides more efficiency to our day-to-day work," said Dr. Wills. "We have begun to track the purpose of data requested of our office and the impact that its use has on the university."



The department provides data to administra-

tors and professors seeking research grants and supports efforts to bring other monies to the university through some of the performance funding standards.

The Office of Institutional Research recently gathered data for an MTSU satellite campus proposal.

The department now places all of its data online in simple-to-read spreadsheets, making it much easier for interested parties to access the information they need about the university. The Office of Institutional Research sometimes receives more than 60 online requests for information each month. By keeping quality, updated information on its Web site, the department can distribute data

faster and more efficiently.

This is the first time MTSU's Office of Institutional Research received an award in the best Web site category, although the department has won both regional and state awards in the past. Previous state awards are Best Fact Book in both 2000 and 2001; regional awards brought home by the department include Best Electronic Fact Book (2004), Best Fact Book (2000) and the SAIR Award of Merit for Outstanding Fact Book (1998), among others.

MTSU's institutional research office is a member of SAIR, a regional affiliate of the Association for Institutional Research. Wills, who also serves on the AIR Board of Directors' membership committee and evaluation committee, works alongside MTSU institutional research staff members Imam Anerin, Janae Peterson and Patricia Mayes.

WHAT'S THE WORD

Hip-hop, art converge in open-mic (and open-air) performances

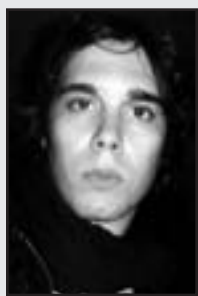
by Brian Estes
news@mtsu.edu

If you've been paying attention, you might have seen their fliers posted around campus. Or maybe you have seen a large congregation in the courtyard outside the James E. Walker Library, blasting loud rap music and deep throbbing bass lines.

It's all part of an attempt by Brooklyn native and MTSU student Dean Andrews to bring a taste of the New York hip-hop/art scene to the Middle Tennessee campus.

"It's about creating community and overcoming divisions," said Andrews, president of the Word Up! Performance Collective.

Every Tuesday and Thursday night, Word Up! has been hosting rap battles, poetry recitation, and displays of music, art and dance. It's part of a movement that Andrews, a senior political science major, says is targeted at taking back public spaces for artistic expression.



Andrews

The organization put on outdoor performances for the bulk of the fall semester, but

weather conditions have forced the shows to move to indoor house parties. The group's Facebook page says that it will reserve on-campus rooms for events after it's been officially registered with the university for more than a month, a date that fell on Nov. 24. Until those on-campus dates are finalized, Word Up! will be hosting house parties.

Andrews said the inspiration for forming Word Up! came from his experiences growing up in Brooklyn.

"In New York, anywhere you go there are live performers—break dancers on the street, so many performers," Andrews said. "I always saw new things, and I bring a lot of those influences when I'm doing these shows."

Andrew Scott is a regular attendee of Word Up! gatherings and was a winner of one of the group's rap battles. He said that what goes on here is a far cry from what he would expect to see in his hometown of Roanoke, Va.

"You really wouldn't expect to see all these common people coming together," Scott said. "I really like the fellowship and instrumentation."

The group was started early in the fall semester when Andrews saw Quinn Ray and Ryan Ford playing their instruments outside the Cyber Café. Andrews had been going to Café Coco in



Nashville to do poetry recitals, and the three decided to combine their efforts and perform publicly. (Both Ford and Ray later became officers in Word Up!) The group's first shows took place outside Cyber, but they soon moved to the MTSU quad between the library and the Business and Aerospace Building.

For more information about the group's scheduled events, search for "Word Up!" in groups at Facebook.com or visit its MySpace page at www.myspace.com/wordupnashville.

Traffic patterns changing around Cope as Alumni Drive work continues

Alumni Drive between Blue Raider Drive and Friendship Way has reopened, also opening the south lot behind the James E. Walker Library and returning the parking in Ezell Lot by the Honors Building back to students, MTSU's Office of Parking and Transportation Services has announced.

In order to complete Alumni Drive, the section between Friendship Street and Old Main Circle will be closed effective Monday, Dec. 1. There will be no campus access via Baird Lane after Dec. 1.

During construction, officials said, Old Main Circle from East Main Street toward the Cope Administration Building will be closed just past the entrance to Visitor's Circle. Drivers will be able to turn into the circle in front of Cope, but they will need to exit to the right. Two-way traffic will be created from the Circle to the cut-through on Old Main Circle. There will be no on-street parking along Alumni Drive to allow two-way traffic.

The parking lot on the east side of Cope will be closed, because there will

be no way to access the lot during construction. To access Friendship Street and the Judd/Sims parking lot, a detour will be created through the Clement/Gore parking lot, officials said.

Weird weather? Watch the Web

When inclement weather arises, MTSU closing information will be available online and on area radio and TV stations. Class cancellations will apply to all classes, credit and noncredit. MTSU offices will be open unless the message specifically says all offices will be closed. Overnight closing decisions will be announced by 6 a.m. the next day. Learn more anytime at www.mtsunews.com by clicking the "Inclement Weather Information" link or visiting www.mtsu.edu/alert4u.

Campus Calendar

Dec. 1, 2008-Jan. 11, 2009

Please note:

Event dates, times and locations may change after press time. Please verify specifics when making plans.

TV Schedule



"Middle Tennessee Record"

Cable Channel 9:
Monday-Sunday—7 a.m., 5 p.m.
NewsChannel 5+:
Sundays—1:30 p.m.

Through Dec. 4

Photo Exhibit: Tom Mallonee, "Evidence of Passing: Vanishing Points Along an American Road"

8 a.m.-4:30 p.m. Monday-Friday, noon-4 p.m. Saturday, 6-9:45 p.m. Sunday
Baldwin Photographic Gallery, Learning Resources Center
For information, contact: 615-898-2085.

Dec. 1

Monday, Dec. 1
Faculty Senate Meeting
4:30 p.m., JUB 100
For information, contact: 615-898-2582.

Handel's "Messiah"
7:30 p.m., Hinton Music Hall
For information, contact: 615-898-2493.

Dec. 2

Tuesday, Dec. 2
JAWC Career/Professional Brown-Bag Development Series: Angela Golden, "Using Technology to Manage Your Time, Part II"
Noon-1 p.m., Hazlewood Dining Room, James Union Building
For information, contact: 615-898-2193.

Phi Kappa Phi Honor Society Initiation Ceremony
5 p.m., JUB Tennessee Room
For information, visit www.mtsu.edu/~pkp/index.htm or contact: 615-898-2152.

Tuesday, Dec. 2
MT Men's Basketball vs. Houston
7 p.m., Murphy Center
For information, visit www.goblueraiders.com or contact: 615-898-2450.

MTSU Symphonic Band
7:30 p.m., Hinton Music Hall
For information, contact: 615-898-2493.

Dec. 3

Wednesday, Dec. 3
Commercial Music Ensemble
7:30 p.m., Hinton Music Hall
For information, contact: 615-898-2493.

Dec. 4

Thursday, Dec. 4
Accompanying Class Studio Recital
3 p.m., Hinton Music Hall
For information, contact: 615-898-2493.

MT Women's Basketball vs. Louisville
7 p.m., Murphy Center
For information, visit www.goblueraiders.com or contact: 615-898-2450.

Dec. 5

Friday, Dec. 5
First Friday Star Party: Dr. Chuck Higgins, "Star Formation in Orion"
6:30-8:30 p.m., Wiser-Patten Science Hall
For information, contact: 615-898-5946.

MTSU Women's Chorale "Victorian Holiday Feast"
6 p.m., JUB Tennessee Room
Admission: \$30 per person (includes meal and entertainment), \$17 for MTSU students
Tickets must be purchased in advance; no sales at the door
For information, visit www.mtsumusic.com or contact: 615-898-5922.

Calendar Items Welcomed

Submit your campus event calendar items (at least three weeks in advance of the event, please) to gfann@mtsu.edu.

Dec. 7

Sunday, Dec. 7
"MTSU On the Record—Students for Autism Awareness"
Students for Autism Awareness president and founder Ed Evans discusses the project.
7 a.m., WMOT 89.5-FM
Podcast available at www.mtsunews.com.

MT Men's Basketball vs. Southern Illinois
4 p.m., Murphy Center
For information, visit www.goblueraiders.com or contact: 615-898-2450.

Dec. 11

Thursday, Dec. 11
Retired Faculty/Staff Coffee
9:30 a.m., Foundation House
For information, contact: 615-898-5756.

MT Men's Basketball vs. Troy
7 p.m., Murphy Center
For information, visit www.goblueraiders.com or contact: 615-898-2450.

Dec. 13

Saturday, Dec. 13
Fall Commencement
9 a.m. and 1 p.m., Murphy Center
For information, visit www.mtsu.edu/~records/grad.htm or contact: 615-898-5756.

Dec. 14

Sunday, Dec. 14
MT Women's Basketball vs. Alabama
4 p.m., Murphy Center
For information, visit www.goblueraiders.com or contact: 615-898-2450.

Dec. 15

Monday, Dec. 15
MT Men's Basketball vs. Tennessee-Martin
7 p.m., Murphy Center
For information, visit www.goblueraiders.com or contact: 615-898-2450.

Dec. 16

Tuesday, Dec. 16
MT Women's Basketball vs. Austin Peay
7 p.m., Murphy Center
For information, visit www.goblueraiders.com or contact: 615-898-2450.

Dec. 20

Saturday, Dec. 20
MT Women's Basketball vs. Troy
7 p.m., Murphy Center
For information, visit www.goblueraiders.com or contact: 615-898-2450.

Dec. 25-Jan. 1

University closed for winter holidays.

Jan. 2

Friday, Jan. 2
University offices reopen.

Jan. 7

Wednesday, Jan. 7
MT Women's Basketball vs. Florida Atlantic
7 p.m., Murphy Center
For information, visit www.goblueraiders.com or contact: 615-898-2450.

Jan. 8

Thursday, Jan. 8
MT Men's Basketball vs. Florida Atlantic
7 p.m., Murphy Center
For information, visit www.goblueraiders.com or contact: 615-898-2450.

Jan. 10

Saturday, Jan. 10
MT Men's Basketball vs. Florida International
7 p.m., Murphy Center
For information, visit www.goblueraiders.com or contact: 615-898-2450.

Jan. 11

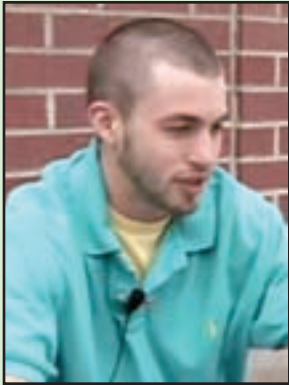
Sunday, Jan. 11
MT Women's Basketball vs. Florida International
Noon, Murphy Center
For information, visit www.goblueraiders.com or contact: 615-898-2450.

Students changing habits to save money



As prices are down from record summer highs, but with MTSU eyeing still more budget cutbacks, increasingly cash-strapped students continue to look for ways to save money and cut transportation costs. MTSU students shared their own ideas about coping with tough times in the November edition of "Middle Tennessee Record," MTSU's monthly video magazine (available anytime at www.mtsunews.com), in response to the question:

"How are the economy and gas prices affecting you?"



Jeffrey Lloyd,
senior,
business administration
major

"I work full-time, and the money I'm putting into my 401(k)—as you can tell from everybody—I'm kind of losing out on that. It's going to make the retirement plan, when ... students get older, we're not going to have any money, so something's got to change there."



Paul Bernardini,
sophomore,
public relations major

"I ride my bike to school every day and walk or whatever. Whatever I can do to not use gas, I do it."



Amanda Chittathong,
senior,
marketing major

"I work as a server at a restaurant, and I've noticed that we hardly get any customers lately. It's been really slow, extremely slow, so I'm making less money: less money for gas, less money for other things."



Allison Schenerlein,
freshman,
undeclared major

"With gas prices being so high, I have to work more hours and save more money. I live an hour away, so I have to drive out here every Tuesday and Thursday. ... I have to be more careful about spending it (money) on stuff I don't need."



Adam Price,
graduate student,
recording arts and
technology major

"I'm walking home right now. I don't drive to campus so much anymore because the price of gas doesn't make it worth it. I kind of wanted to get a little more exercise and come to school an alternative way, and when gas hit \$4 a gallon, that kind of sealed the deal."

— Drew Dunlop and Eric Jackson

1,600 from page 1

Governors Club of Tennessee, Freeman was a recipient of the Jennings A. Jones College of Business Exemplar Award in 2002, an honor presented to MTSU alumni whose achievements are exemplary for current students.

Dr. Charles Manning, who has served as chancellor of the Tennessee Board of Regents system since April 2000, will be the featured speaker for the 1 p.m. commencement ceremony.

Before joining the TBR, Manning served as chancellor of West Virginia's university system.

During his eight-year tenure with TBR, Manning, who earned a doctorate in analytical chemistry from the University of Maryland, is credited with improving innovation, efficiency and responsiveness regarding the needs of Tennessee college students with an emphasis on collaboration among TBR institutions.

During the upcoming commencement, Miller said, all degree candidates should keep in mind the importance of appropriate dress, decorum and respect for the ceremony.

"We believe this is a very important day in the lives of many people," Miller said. "It is difficult to give the ceremony the dignified



Freeman

atmosphere it deserves if people are using air horns or leaving before the completion of the ceremony."

The graduation committee also emphasized that students who participate in commencement will be required to stay for the entire ceremony. Each ceremony should last about two hours. Candidates planning celebration activities should be aware of this commitment, Miller said.

On Dec. 13, the doors to Murphy Center will open at 8 for the morning ceremony, and candidates are expected to be in their assigned areas, dressed in their caps and gowns, no later than 8:30 a.m. For the afternoon ceremony, the doors will open at noon, and candidates are expected to be in their assigned areas and ready at 12:30 p.m.

Officials report that students who are not in their assigned gyms at the proper times will not be allowed to participate in the ceremony.

For more information about commencement, please visit the Records Office Web site at www.mtsu.edu/~records/grad.htm or call 615-898-2600.



Manning

EXL from page 1

external activity that requires a student to complete a service-learning project in the community.

"The feedback that I've heard from students is that they love EXL courses, because they apply what they are learning in the classroom to the 'real world,' then they write a report on their experiences and reflect on how they applied classroom learning to specific situations in the community," said Dr. Sharon Smith, who teaches Topics in Organizational Communication: Event Planning. Smith's students worked with the Autism Speaks organization and assisted with the Walk Now for Autism event this fall at the Nashville Superspeedway.

"All of this is great to talk about in class," Smith noted, "but when they have to help plan and work events—putting their knowledge into action—it makes quite an impression on them."

Marc Barr, professor of electronic media communication, called EXL a "throwback to the way people used to learn skills, by doing the work instead of just reading and theorizing about it." This past spring, Barr's class produced videos for the local Boys and Girls Clubs of Rutherford County. He will teach an EXL Honors class next spring.

"It's a very logical way to handle many types of classes," Barr said. "[Students] have to learn to work as part of a team, communicate their ideas, work with clients and get feedback. ... I could very easily see which students were going to be leaders, who was going to step up when a

problem arose, who was a more dependent type of learner."

The 2007 Expanding Your Horizon Conference welcomed more than 350 middle- and high-school girls to campus, and EXL students assisted in hands-on workshops, said Laura Clippard, adviser in the Honors College. "The collaboration between MTSU's Expanding Your Horizons and EXL Scholars Program has resulted in positive results for MTSU students," Clippard said. "EXL students learned about research concerning low numbers of women in math and science fields and served as group leaders for the conference."

EXL Scholars receive a special designation on their diploma at graduation signifying their accomplishment, Austin noted.

"We are extremely pleased with the response to EXL at MTSU," she said. "On behalf of everyone involved in the development and implementation of EXL at MTSU, I want to thank our faculty for taking the time and interest to offer this unique learning opportunity to our students. I also want to thank Dr. (Sidney A.) McPhee and Dr. (Kaylene) Gebert for their willingness to pursue EXL and for their support in bringing about its success."

In fall 2011, MTSU's Quality Enhancement Plan Committee must present a report to SACS that demonstrates how the QEP has affected student learning. To learn more about the QEP at MTSU, visit www.mtsu.edu/~mtsacs. For more on EXL Scholars, visit www.mtsu.edu/~exl.

Student captures prestigious Clinton scholarship

by Gina K. Logue
gklogue@mtsu.edu

An MTSU senior is one of only 10 college students in the nation selected to study as a William Jefferson Clinton Scholar in Dubai, United Arab Emirates, next semester.

Nick Mackie, who is a double major in archaeology and international relations with a minor in Middle East studies, will depart for UAE on Jan. 6 and study at American University in Dubai through the spring 2009 semester, returning on April 30. His courses include Comparative Politics of the Middle East, Islamic Art and Architecture, Media Culture and Society, History of the Middle East, and second-year Arabic language studies.

"It pretty much matches up with the requirements for our minor, which is one reason I chose it, because the credits are the same, the system and the class and course descriptions are the same," says the 21-year-old McNair Scholar from Nashville. "So the transfer is a lot easier than if you go other places."

American University in Dubai, according to its Web site (www.aud.edu), "is a private, nonsectarian

institution of higher learning founded in 1995. It serves UAE nationals and international students who seek world-class career-oriented education."

Although a semester at AUD costs \$15,000, the Clinton scholarship will cover nearly \$10,700 of that amount. Mackie will make up the rest with a Pell Grant, a scholarship from the Dell Foundation and a Presidential Scholarship from MTSU.

'The transfer is a lot easier than if you go other places.'

Senior Nick Mackie, recipient of a Clinton scholarship, on his decision to study in Dubai during spring 2009



The Clinton scholarships, notes the AUD Web site, seek "to further the goals of the Clinton Presidential Foundation to strengthen the capacity of people in the United States and throughout the world to meet the challenges of global interdependence."

United Arab Emirates, located between Oman

and Saudi Arabia on the Gulf of Oman and the Persian Gulf, is slightly smaller in area than the state of Maine. Dubai, which is the richest of the UAE's seven emirates, boasts the third-largest oil deposits in the world.

"It is a very wealthy globalized place for the most part," Mackie says. "It doesn't have a large Arab population, per se, as much as it does an immigrant population."

In fact, 50 percent of the UAE's total population is from South Asia and fewer than 20 percent of the total are emiratis (UAE citizens), according to CIA data. Ninety-six percent of the population is Muslim, and Sharia law governs the nation.

"He's motivated, intellectual and thoughtful in his pursuit of knowledge, and I am so excited about this opportunity for him and for our program," Dr. Karen Petersen, an assistant professor of political science, says of Mackie, whom she has taught in several classes.

Mackie's extracurricular activities include the Society for International Relations, of which he is president; Model United Nations; ROTARACT; and the Boy Scouts of America. In addition, he works at a group home as an activities coordinator.



**Sign up for MTSU's
EMERGENCY
TEXT
MESSAGING
SERVICE**

Go to www.mtsu.edu/alert4u



Clayton receives 2009 award for innovative teaching practice

Dr. Maria Clayton is the 2009 recipient of the Award for Innovative Excellence in Teaching, Learning and Technology, which is sponsored annually by the MTSU Teaching, Learning and Technology Roundtable.

One of five nominees, Clayton, an associate professor of English, was commended for her innovative excellence in the use of instructional technology and the vast number of publications and presentations on the use of technology for teaching writing and research.



Clayton

As award recipient, Clayton will attend the International Conference on College Teaching and Learning in Jacksonville, Fla., where she will be recognized in a special ceremony and also will be considered for the Ernest L. Boyer International Award for Excellence in Teaching, Learning and Technology.



Other faculty nominated for the award were Professor Randy Livingston (journalism), Drs. Daniel Prather (aerospace) and Martha "Mari" Weller (physics and astronomy) and Amy York (James E. Walker Library). All nominees are highly regarded for their use of innovative strategies in the classroom, according to the Learning, Teaching and Innovative Technologies Center.

The award ceremony took place during ShareFair, a yearly exhibit featuring outstanding teachers and the innovative learning practices they use with MTSU students.

For a full list of faculty members who participated in ShareFair and a description of their exhibits, visit www.mtsu.edu/ltanditc.

Mock trial wins propel teams to new heights

by Gina K. Logue
gklogue@mtsu.edu

Boyed by their first-place victory in the Mid-South Invitational Tournament on their home campus, the MTSU mock trial competitors captured fourth place with a 6-2 record in a field of 24 teams at a Nov. 21-23 tournament at Duke University. The team now has a combined record of 21 and 3.

The MTSU mock trial teams traveled to Duke after winning the Mid-South competition at home for the first time since 1994. The team led by junior Daniel Vaughn of Mt. Juliet posted a perfect 8-0 record in its division, and, on the basis of its strength of opposition, won the tournament over another 8-0 team from Georgia Tech in a field of 50 teams.

In addition to Vaughn, team members included Rachel Harmon of Spencer and Austin Purvis of Memphis, who, with Vaughan, played attorneys, and Lani Lester of Memphis, Samantha Ferrell of Lebanon and Lee Whitwell of Pulaski, who played witnesses.

Lester received a top witness award for her performances at both the Duke and Mid-South competitions, while Jacob Strait of Nashville won an award as an outstanding witness and Nikke Vanderwalker of White House won an award as an outstanding attorney at the Mid-South event.

Each team at the tournament participated in four rounds (two on each side), which were each judged by two attorneys. MTSU's team challenged the University of Mississippi, Rhodes College, the University of Georgia and Mississippi Valley State University.

The Mid-South Invitational is one of the nation's largest mock trial competitions. It began in 1989 at Rhodes College and has been at MTSU for the last 17 years. Teams attended from Alabama, California, Georgia, Florida, Kentucky, North Carolina, Ohio, Missouri, South Carolina, and Tennessee.

MTSU teams are coached by Dr. John R. Vile, dean of the University Honors College; Brandi Snow, an MTSU mock trial alumna; and Dr. Amanda DiPaulo of the Department of Political Science.

Brave Knights of Project Help



TO THE RESCUE—Jim Harding, left, and Richard Lee of the Knights of Columbus group from St. Rose Catholic Church celebrate with four young friends from Project Help after the Knights donated \$1,000 for specific operating costs for the center. Project Help also is one of the beneficiaries of MTSU's Employee Charitable Giving Campaign, which concluded Nov. 21 and was tabulating totals at press time. Read the Jan. 12 *Record* for the final 2008 totals, and visit www.mtsu.edu/giventsu now for a list of employee prizewinners.

photo submitted

Plan ahead in '09: Preretirement seminar is Jan. 15

The Rutherford County Retired Teachers Association is sponsoring a free preretirement seminar for all local educators on Thursday, Jan. 15, from 3:30 to 6 p.m. at North Boulevard Church of Christ, 1112 N. Rutherford Blvd.

Reservations are required to ensure that participants receive needed materials. Reservations can be made through Monday, Jan. 12, by sending an e-mail with your name, school and telephone number to Sara Gannon at Sarag49@aol.com or by calling Gannon at 615-890-5050.

This year's presenter will be Ron Pendergrass, associate executive director of the Tennessee Retired Teachers Association. Any teacher who will retire under the State Retirement Plan, regardless of Tennessee Education Association membership, will learn beneficial information for retirement decision-making.

Seminar participants should enter via the side door marked "Fellowship Kitchen" on the north side of the church, organizers said. Light refreshments will be served beginning at 3:30 p.m. until the seminar begins promptly at 4 p.m.

Faculty

from page 8

Business Education Association Conference Sept. 27 in Nashville.

Dr. Ronda G. Henderson (business communication and entrepreneurship) presented "Web 2.0 Collaborative Technologies" at the Tennessee Business Education Association Conference in Nashville Sept. 27.

Dr. Bob Petersen (English) presented "Batman in Genderland: The Superhero as Feminine Other in Paul Dini's THE WONDERLAND GANG" as part of a panel on gender in comics and anime at the South Atlantic Modern Language Association meeting Nov. 7 in Louisville, Ky.

Dr. Sherry J. Roberts (business communication and entrepreneurship) presented "Tips and Tricks for Interviewing, Including the Resume" at the Tennessee Business Education Association 2008 Annual Conference Sept. 26-27 in Nashville. She also was the keynote speaker for the event's awards luncheon Sept. 27, speaking on "Sounds of Excellence in Business Education."

Dr. Diane J. Sawyer (dyslexic studies) presented a poster session, "Online Teacher Training in Dyslexia: Lessons Learned," at the 59th Annual Conference of the International Dyslexia Association in Seattle, Wash., on Oct. 31. Center for Dyslexia staff

Janet C. Camp and **Karen M. Jones** also attended the four-day conference.

Publications

Dr. Edd Applegate (journalism) contributed the lead article, "Factors That Impact News," to the newly published *Public Relations Quarterly*, Vol. 52, No. 3.

Dr. Tom Brinthaup (psychology) has published a paper with colleagues Michelle Pilati (California Community College System) and Beverly King (University of North Carolina at Pembroke), "Psychology Teaching Resources in the MERLOT Digital Learning Objects Catalog," in the *Journal of Instructional Psychology*, Vol. 35(3), pp. 240-245.

Lucinda Cockrell (Center for Popular Music) has published *A Victorian Christmas: Sentiments and Sounds of a Bygone Era* (Thomas Nelson, 2008), a collection of Victorian-era images and verse from holiday cards accompanied by a CD of period holiday music performed by mandolinist Butch Baldassari.

Drs. Minsoo Kang and **Helen Binkley** (health and human performance) have published a paper, "Validity and reliability of the medicine ball throw for kindergarten children," with colleagues K.L. Davis,

B.B. Boswell, K.D. DuBose and S. Altman in the *Journal of Strength and Conditioning Research*, 22, 1958-1963.

Drs. Diane J. Sawyer (dyslexic studies) and **Stuart E. Bernstein** (psychology) prepared a chapter, "Students with phonological dyslexia in school-based programs: Insights from Tennessee schools," in the recently published *Dyslexia Handbook* (Sage Publications, 2008).

Dr. Gretchen R. Webber (sociology) has published two articles with Christine L. Williams: "Mothers in 'Good' and 'Bad' Part-Time Jobs: Different Problems, Same Results" in *Gender & Society* 22:752-777; and "Part-Time Work and the Gender Division of Labor" in *Qualitative Sociology* 31:15-36.

See yourself in The Record!

E-mail your faculty/staff accomplishments to gfann@mtsu.edu, Attention: *The Record*, Faculty/Staff Update. Please note that publication of printed or hand-written contributions may be delayed.

Entrepreneur Martin offers techonomics class for spring '09

Dr. Lee Martin, chairman of Abunga.com LLC and a managing member of Clarity Resources, a mentor capitalist group specializing in business architecture, is scheduled to teach a class at MTSU in the spring on "Techonomics: Anticipating the Future."

The class, which is cross-listed as Honors 4600, Business Communication and Entrepreneurship 4200 and Management and Marketing 4990, will meet from 2:20 to 3:45 p.m. on Mondays and Wednesdays in Room 218 of the Paul W. Martin Sr. Honors Building.

The class is especially designed for students who seek leadership roles in their communities, business or service organizations. It will provide students with a framework to analyze trends in their fields of interest by quantifying the effects of technological advancement on their professional endeavors.

The class is also suited for upper-division students with business, leadership or technical backgrounds.

Lee Martin and his brother, Paul W. Martin Jr., also an MTSU alumnus (B.S. '75), provided \$2 million that was matched by the university for the construction of the Honors Building.



At MTSU, we take fire alarms seriously.
Respond as if your life depended on it.

IT DOES.

www.mtsu.edu/alert4u

Senior spreads music gospel with work on Graham biopic

by Brian Estes
news@mtsu.edu

Moviegoers are getting the chance to hear a piece of music recorded by an MTSU student as they hit theaters this fall. Tracey Phillips, a senior music major, composed and performed "Templeton's Rag," which appears in the major motion picture "Billy: The Early Years." The biopic of evangelist Billy Graham opened in theaters nationwide in October.

"It's a piano piece with a barroom kind of a feel," Phillips says. "It has a '40s-type vibe."

The song appears in a scene in which Charles Templeton, who preached with Graham in the 1940s and '50s, is lying in a hospital bed and has a flashback scene to his younger days. Phillips also recorded the piano parts for songs performed by country music star Josh Turner, who plays George Beverly Shea in the movie; one of those, "Almost Persuaded," appears on the movie soundtrack.

She says that the opportunity basically presented itself through networking. She knew Tommy Cooper, a music engineer in Nashville, and Reggie Smith, who performs background vocals and has worked with renowned gospel artist Bill Gaither. Smith knew Scott Brasher, the music scorer for the film, and suggested that he take Phillips on to play the tracks.

"It was great, because you would record the track, then they would immediately tap my music and you could hear what I recorded being played right along with the movie," Phillips says.

Phillips is a pianist and music arranger and has been working in the professional music field for the last 30 years. Some of her accomplishments include being nominated by the Gospel Music Association for the Dove Award for Best Praise and Worship Instrumental in 2003. She also has had piano arrangements published for Word Entertainment.

Phillips has been taking private lessons with MTSU music professor Cedric Dent, who is a member of the Grammy Award-winning gospel/jazz group Take 6. He also is a music



Dent



TAKING 5—Senior music major Tracey Phillips takes a break in the lobby during a recent concert performance by Take 6, the Grammy-winning a cappella group that includes Dr. Cedric Dent, MTSU music professor. Phillips composed a song and recorded piano parts for the soundtrack of "Billy: The Early Years," a new film about evangelist Billy Graham that was filmed in Nashville last year.

photo submitted

arranger, like Phillips. He says the process, which basically involves deciding what each instrument will play and what parts each singer will sing, "is like painting a picture."

"There's no limit to your imagination," Dent says. "To come up with a musical idea and have someone realize it for you, that's such a thrill."

He adds that he has been helping Phillips prepare for her senior recital and also suggests musical directions and ideas to pursue.

"She has what I would call a great technique," Dent says. "It sounds very authentic and very well-done. She also has a good ear for music, which I would say gives her an edge over most musicians."

Phillips also had praise for her professor.

"He's so encouraging, and brings your creativity out of you," Phillips says of Dent. "He taught me how to listen to the music and several things about arranging techniques."

Phillips also will be making a presentation in March to the American Society of Music Conference on improvisational elements of piano accompaniment for convention-style singing.

"I was very excited when I heard I had been accepted," Phillips says. "That's a very prestigious music conference."

the RECORD

Tom Tozer
Director, News and Public Affairs

Editor: Gina E. Fann
gfann@mtsu.edu

Contributors: Gina K. Logue, John Lynch, Paula Morton, Lisa L. Rollins, Randy Weiler, Eric Jackson, Claire Rogers, Drew Dunlop, Brian Estes, Sydney Hester, Elizabeth McAmis, Sarah Visocky and Stacy Williams.

Visit www.mtsunews.com.

Photos: MTSU Photographic Services, except where noted.

Printed by Franklin Web Printing Co.

Phone: 615-898-2919
Fax: 615-898-5714

The Record is published every two weeks by the Office of News and Public Affairs at MTSU. It is distributed free to faculty, staff, friends and media outlets.

Address all correspondence to:

The Record
Office of News and Public Affairs
MTSU P.O. Box 72
1301 E. Main St.
Murfreesboro, Tenn. 37132

MTSU, a Tennessee Board of Regents Institution, is an equal opportunity, non-racially identifiable, educational institution that does not discriminate against individuals with disabilities.

URO36-1108

Faculty/Staff Update

Appointments

Dr. Don Hong (mathematics) recently was invited to join the editorial board for *The Current Development in Theory and Applications of Wavelets*. His three-year appointment as a member of editorial board for the journal is from 2008 to 2011.

Christi Underdown (Center for Popular Music) recently was appointed 2009 president-elect for the Special Library Association, Southern Appalachian Chapter. The SLA is an international professional organization for special collections and archives professionals, promoting innovative information networking.

Passages

Mr. Chester D. Bogle (Facilities Services), 69, passed away Nov. 3. Mr. Bogle, a veteran of the U.S. Army Reserve, worked for MTSU from August 1979 to December 1994 and from January 1996 until his retirement in June 2005 as a steam-chiller operator. He had returned to MTSU in February 2006 and was working as an hourly employee in the Facilities Services Department at the time of his death. He was preceded in death by his wife, Mrs. Pauline Corker Bogle, and is survived by two

stepdaughters, Valerie Teal and Susan Stewart; two brothers, Otis and Mack Bogle; one sister, Eppie Elnora Upchurch; four nieces, two nephews and three grandchildren. Memorials may be made to the Disabled American Veterans organization.

Mrs. Pamela McCord Bowman (nursing), 57, passed away Nov. 17. Mrs. Bowman, a Secretary II in the School of Nursing, is survived by her loving granddaughter, Mia Gabrielle Jones of Murfreesboro; her parents, Donald and Irene McCord; her husband, Bill Bowman; one son, Jared Garrison Fulford, and daughter-in-law, Kelly Fulford, of Murfreesboro; two daughters, Karen Irene Fulford of Chicago and Julie Kay Fulford of Murfreesboro; and one brother, Kevin McCord of Manchester, Tenn. Memorials may be made to Monroe Carell Jr. Vanderbilt Children's Hospital.

Mrs. Patricia J.Z.H. Forman (Business Office), 51, passed away Nov. 4. An ordained Unitarian minister who worked in the Wisconsin State Prison system for many years, Mrs. Forman began working at MTSU in November 2001 and was employed as an Account Clerk III at the time of her death. She is survived by her mother, Olga Demkowicz; her husband, Matthew Forman of Murfreesboro; a daughter, Fawn

Hawpetoss of Murfreesboro; one brother, Steven (Cindy) Zelinka of Bath, Maine; and one sister, Ruth Zelinka of Hawaii. Memorials may be made to the American Diabetes Association, American Heart Association or St. Jude Children's Research Hospital.

Dr. Ernestine Nichols Reeder (human sciences), 80, passed away Nov. 7. Dr. Reeder, the former chair of the Department of Human Sciences, was employed by MTSU from August 1972 until her retirement in June 1994. She is survived by her son, Kevin R. Reeder, his wife, Inez, and a granddaughter, Dennis Nunnally, all of Little Rock, Ark; her brother, Leroy Nichols, and his wife, Erna, of Washington, N.C.; a sister-in-law, Elizabeth Wilkinson of Nashville; and several nieces and nephews. Memorials may be made to St. Paul's Episcopal Church or the Ernestine N. Reeder Honor Scholarship at MTSU.

Presentations

Drs. Patrick R. Geho and Marsha O. Smith (business communication and entrepreneurship) presented "Tennessee Virtual Enterprise International™: Teachers' Perceptions" at the Tennessee

See 'Faculty' page 7