

Summer Quickview

Summer Index 214100

POSITION NUMBERS

Classification	Position number	EClass	ECode
Full time faculty	132810	F9	PROF, ASSC, ASST, LECT, INST
Chair administration	132811	F9	PROFA, ASSCA, ASSTA
Adjunct	132870	AF	LECTJ
Admin/executive	132730	AD, AE	LECTJ, INSTJ, PROFJ
Faculty 12-month	132750	FA	PROFJ, ASSCJ, ASSTJ

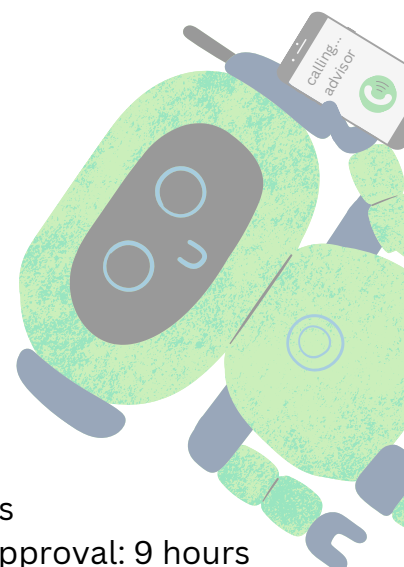
MINIMUM ENROLLMENTS

Course level	# of students
1000,2000	15
3000, 4000, 5000	10
6000	8
7000	6

WORKLOAD LIMITS

Session	Max WUs
3-week term	1 course or 4 hours
5 or 6-week term	2 courses of 8 hours

Max load: 8 hours
 Exception with approval: 9 hours
 Externally-funded research: 10.6656



WORKLOAD ASSIGNMENT

Description	Workload/formula
Contact ours exceeding credit hours	credit hour value + HALF difference between contact and credit hours
Prescribed courses	+1 WU to credit hours
Off campus/dual enrollment	up to 1.25 x credit hour value
Professional counseling program practica/ internships	0.75 WU per student (COUN 6270, 6540, 6920, 6930 & CDIS 4750)
Poblems, practic, indepeditat study, cooperative, service learning	0.1 WU per UD SCH* 0.2 WU per GR SCH*
Undergrad research	0.2 WU per GR SCH*
Internship supervision	0.1 WU per GR SCH*
Thesis supervision	0.2 WU per SCH (Max 3 WU per student over time)
Dissertation supervision	0.4 WU per SCH (Max 5 WU per student over time)

*cap = credit hour value of course